

To: All Contractors

From: Integrity Construction Services, LLC (Construction Manager)

Date: June 9, 2016

RE: Kirtland – Health Sciences Education and Training Center

Bulletin No. 6

This Bulletin is being issued for the purpose of modifying and/or clarifying the original Bidding Documents, construction set issued 6/8/15, and previous addendums.

All work included herein shall be in accordance with the general requirements of the original bidding documents, except as specifically noted herein.

This Bulletin is being sent to all contractors.

Bulletin Items

MEP ITEMS:

See MEP Bulletin No. 6 dated 6/8/16 from Nealis Engineering – 2 pages plus supplemental drawing (SK-M13).



nealis
ENGINEERING



830 Cottageview Dr., Suite 102
Traverse City, MI 49684
P 231.933.0510 | F 231.933.3215
W www.nealisengineering.com

Request for Bulletin #6

Date: June 08, 2016

To: Integrity Construction Service
829 W. Main Street
Gaylord, MI. 49735

Attn: Ed Hunt

Project: Kirtland Community College Health Sciences Education and Training Center

Reference: Plumbing, and Electrical Drawings

Notes By: Gary Nealis and Bo Reinhardt P.E.

Distribution: Todd Seidell and Brittany Stripp – Seidell Architects

CONDITIONS:

1. This Bulletin is intended as a request for pricing adjustments made to the original Construction Documents. It is not an authorization to proceed with any work regarding these proposed changes.
2. All work is to be provided in accordance with applicable codes.
3. The contractor is to insert the amount of the cost change in the appropriate blank space following each item.
4. The contractor shall also provide an itemized breakdown pricing for each item as an attachment.

MECHANICAL

M1 Reference Mechanical Drawing Sheet MP2.

- A. COMMUNITY ROOM LOBBY 136 – Modify ductwork per attached drawing SK-M13 to eliminate externally wrapped duct from being exposed.

Add / Deduct / No Change \$ _____

ELECTRICAL

E1 Reference Electrical Drawing Sheet SE1 – Site Electrical Plan and Electrical Drawing Sheet E7 – Interior Light Fixture Schedule.

- A. **TYPE-DD (FLAG POLE LIGHT FIXTURE)** – Change the two (2) Type-DD light fixtures as described below and relocate them to now be mounted on the flag pole itself. Mount the light fixtures on the north and south sides of the flag pole so that the top of the fixture is at approx. 13'-0" to 15'-0" AFG, and connect THRU LCP-1 (R27) 3B-14.

- B. INTERIOR LIGHT FIXTURE SCHEDULE – Add the following model number and description:

DD KIRLIN #LWR-09490-41K-35,
WET LOCATION LISTED FLAGPOLE INDIRECT LED 9" DIAMETER
CYLINDER FIXTURE, WITH ALUMINUM FINISH, 0-10V DIMMING DRIVER,
GLASS LENS, AND 74W, 4100K, 85CRI, 4800 LUMEN NOMINAL LED.
VERIFY POLE DIAMETER PRIOR TO ORDERING.

Add / Deduct / No Change \$ _____

E2 Reference Electrical Drawing Sheet E2P – Electrical Power Plan and
Electrical Drawing Sheet E2P – Panel #3C Schedule,

- A. IRRIGATION CONTROLLER – Provide a 120V branch circuit connection to the irrigation controller currently shown on the Drawing Sheet C16, outside the west exterior wall of Mechanical and Electrical Room 126. Connect the irrigation controller to spare 20A/1P circuit breaker currently shown in circuit 3B-20. Update the panel schedule as required.
- B. PANEL #3C SCHEDULE – Change the branch circuit description currently shown in 3C-23, to now be a "SPARE C.B.". Update the panel schedule as required.

Add / Deduct / No Change \$ _____

END OF BULLETIN #6 REQUEST

ROOM "A"
139

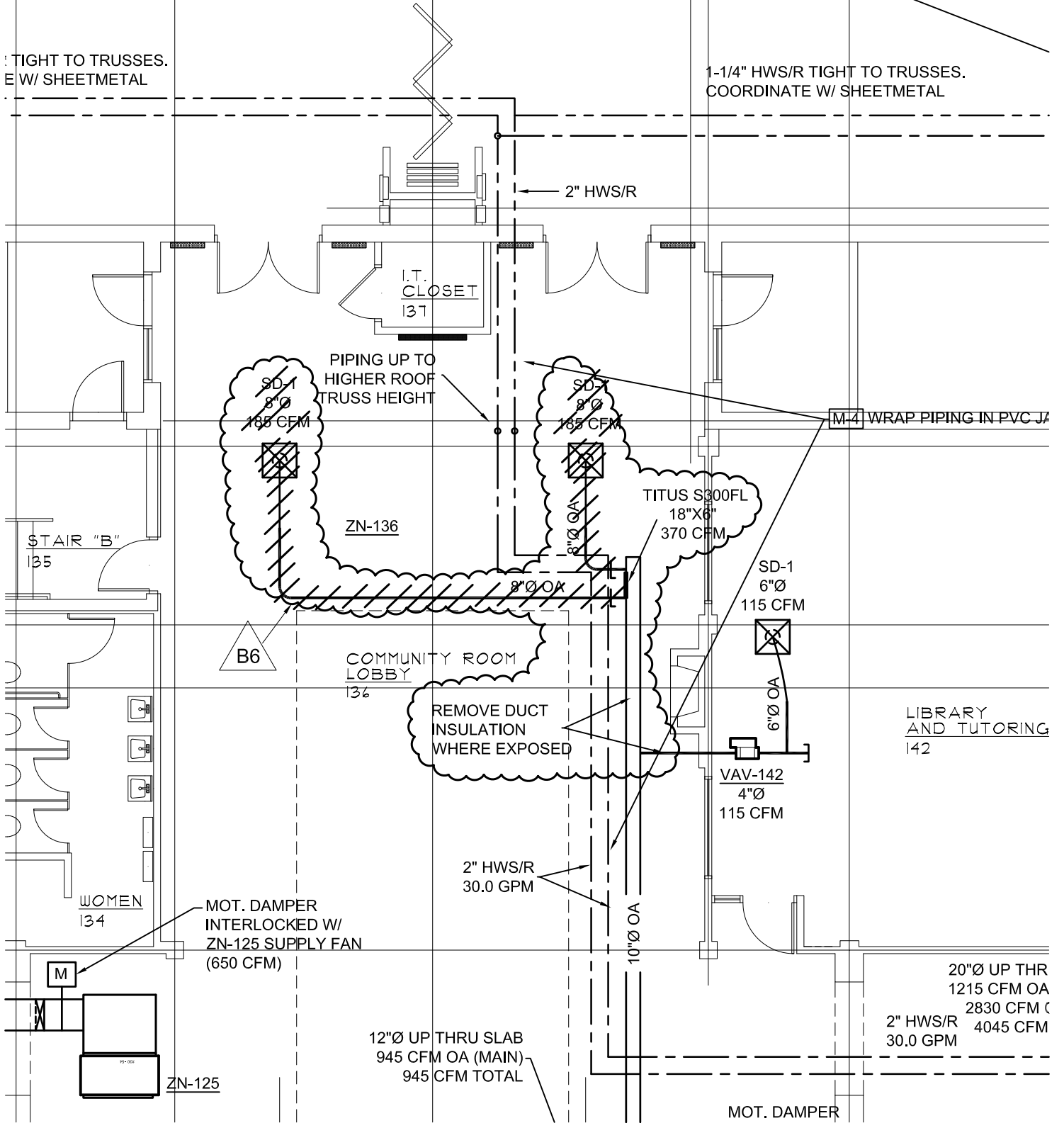
ROOM "B"
140

IMPORTANT:
KEEP ALL HWS/R AND REFRIGERANT PIPING TIGHT
TO SIDE OF AIR HANDLER, OUT OF WAY OF TRAFFIC
IN AND OUT OF DOORS.

WRAP ALL
IN HEA
PVC

TIGHT TO TRUSSES.
E W/ SHEETMETAL

1-1/4" HWS/R TIGHT TO TRUSSES.
COORDINATE W/ SHEETMETAL



REFERENCE SHEET MP2
CORRIDOR HVAC CHANGE
SCALE: 1/8" = 1'-0"



nealis
ENGINEERING

1995 • CELEBRATING 20 YEARS • 2015
830 Cottageview Dr., Suite 102
Traverse City, MI 49684
P 231.933.0510 F 231.933.3215
W www.nealisengineering.com

**KIRTLAND COMMUNITY COLLEGE
HEALTH SCIENCES EDUCATION
AND TRAINING CENTER**

4 MILE ROAD
GRAYLING, MICHIGAN

ISSUED FOR:
MEP BULLETIN #6

DATE:
06-09-2016

SHEET NUMBER:
SK-M13