

To: All Contractors

From: Integrity Construction Services, LLC (Construction Manager)

Date: May 20, 2016

RE: Kirtland – Health Sciences Education and Training Center

---

## **Bulletin No. 5**

This Bulletin is being issued for the purpose of modifying and/or clarifying the original Bidding Documents, construction set issued 6/8/15, and previous addendums.

All work included herein shall be in accordance with the general requirements of the original bidding documents, except as specifically noted herein.

This Bulletin is being sent to all contractors.

## **Bulletin Items**

### **ARCHITECTURAL ITEMS:**

See Bulletin No. 5 dated 5/19/16 from Seidell Architects – 2 pages (two (2) items).

### **MEP ITEMS:**

See MEP Bulletin No. 5 dated 5/19/16 from Nealis Engineering – 3 pages plus supplemental drawing (SK-E12).



May 19, 2016

**Project:** Kirtland Community College  
Health Sciences Education and Training Center  
4800 W. Four Mile Road  
Grayling, MI 49738

**Re:** Bulletin #5

The following is a compilation of architectural items to be addressed in Bulletin #5. These reflect changes and clarifications from the Construction Set issued 6/8/2015 and previous Addendums and Bulletins.

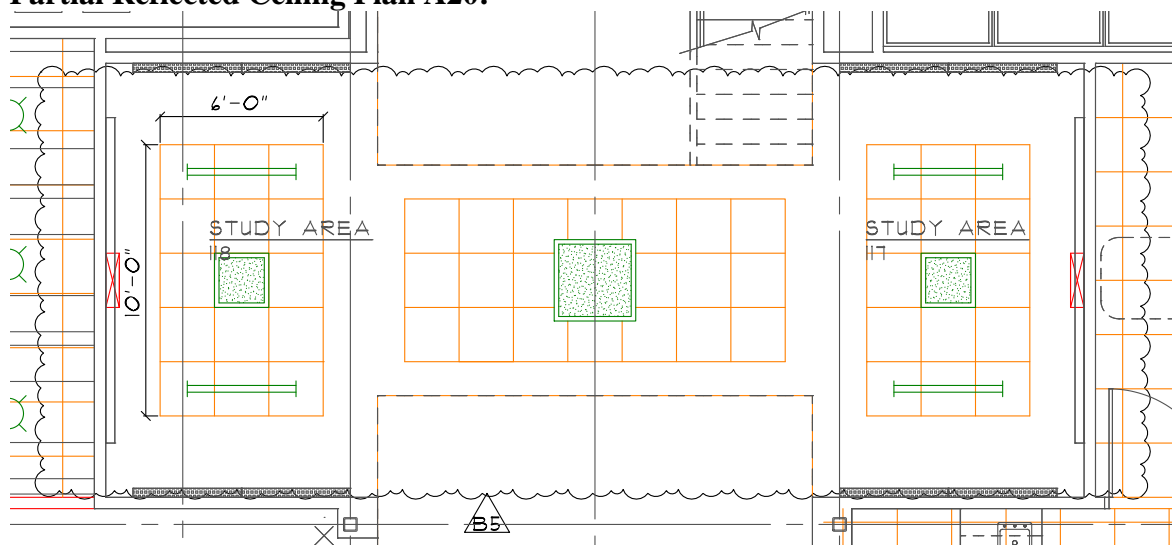
1. Add two ceiling clouds in rooms Study Area 117 and Study Area 118. 10' A.F.F., center in space, 10' long x 6' wide. See electrical Bulletin for new light fixtures. See sketch below.

**Add / Deduct / No Change \$** \_\_\_\_\_

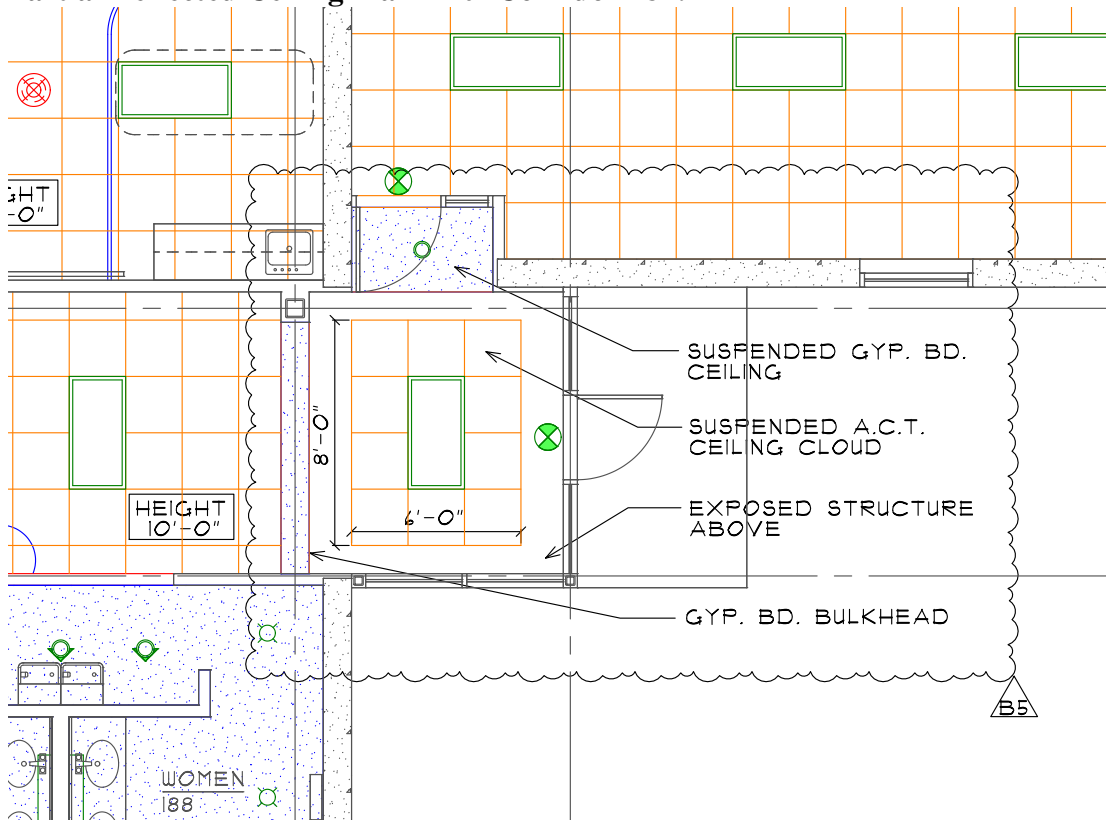
2. Add two ceiling clouds at end of Corridors 149 and 181 in lieu of extending suspended acoustical ceiling tiles entire length of corridor. Add suspended gypsum board ceiling above each of (2) door alcoves near Program Expansion 189. 10' A.F.F., center in space, 8' long x 6' wide. See sketch below.

**Add / Deduct / No Change \$** \_\_\_\_\_

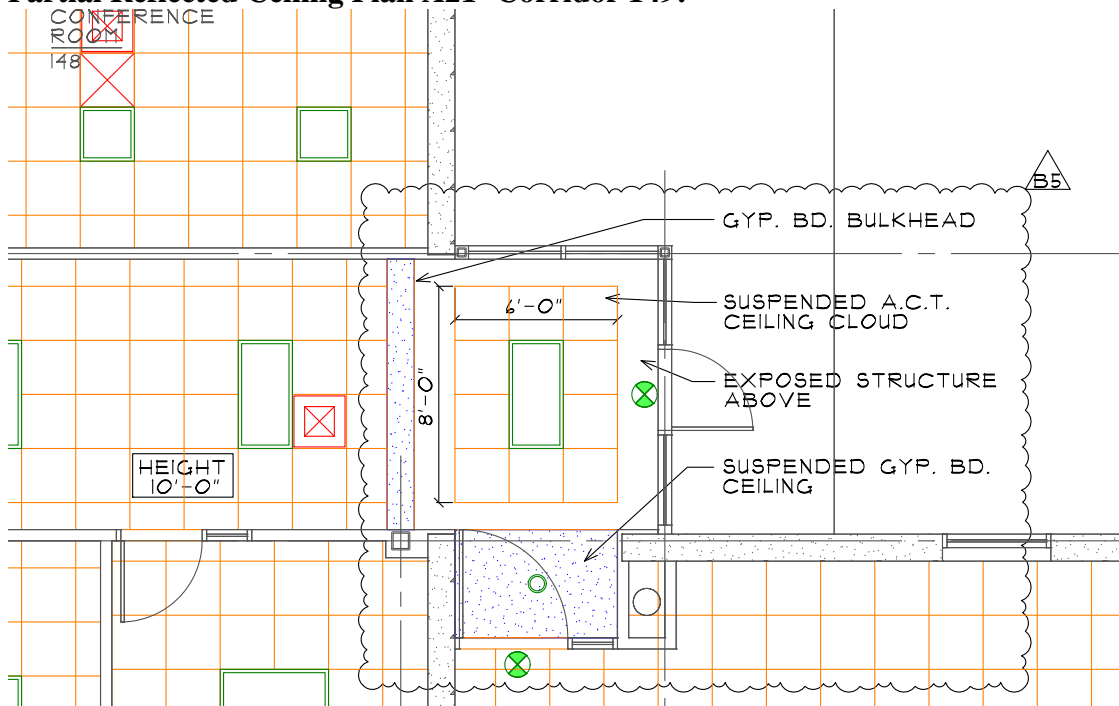
**Partial Reflected Ceiling Plan A20:**



**Partial Reflected Ceiling Plan A20- Corridor 181:**



**Partial Reflected Ceiling Plan A21- Corridor 149:**



**END OF BULLETIN #5**



**nealis**  
ENGINEERING



830 Cottageview Dr., Suite 102  
Traverse City, MI 49684  
P 231.933.0510 | F 231.933.3215  
W [www.nealisengineering.com](http://www.nealisengineering.com)

## ***Request for Bulletin #5***

**Date:** May 19, 2016

**To:** Integrity Construction Service  
829 W. Main Street  
Gaylord, MI. 49735

**Attn:** Ed Hunt

**Project:** Kirtland Community College Health Sciences Education and Training Center

**Reference:** Plumbing, and Electrical Drawings

**Notes By:** Mark Wilkes and Bo Reinhardt P.E.

**Distribution:** Todd Seidell and Brittany Stripp – Seidell Architects

### **CONDITIONS:**

1. This Bulletin is intended as a request for pricing adjustments made to the original Construction Documents. It is not an authorization to proceed with any work regarding these proposed changes.
2. All work is to be provided in accordance with applicable codes.
3. The contractor is to insert the amount of the cost change in the appropriate blank space following each item.
4. The contractor shall also provide an itemized breakdown pricing for each item as an attachment.

### **PLUMBING**

- P1** Reference Plumbing Drawing Sheet P1 – Partial Plumbing First Floor Plan.  
A. LOBBY 101 – Replace two pex tubing pipes with type L copper from north to south walls.

Add / Deduct / No Change \$ \_\_\_\_\_

### **ELECTRICAL**

- E1** Reference Electrical Drawing Sheet E4P – Partial Electrical Power Second Floor Plan.  
A. CLASSROOM 224 – Change the branch circuit designation 2A-2,4 currently shown for the three (3) HVAC Evaporators above this space, to now be fed from branch circuit 2A-30,32.

Reference Electrical Drawing Sheet E10 – Partial Electrical Power First Floor Plan and

B. PANEL #3A SCHEDULE –

1. Change the 20A/2P branch circuit breaker currently shown in circuits 2A-2,4 to now be a 15A/2P branch circuit breaker. Change the associated load description to now be “(5) HVAC EVAP. NORTH”.
2. Add a 15A/2P branch circuit breaker in circuit 2A-30,32, with a load description: “(3) HVAC EVAP. NW”.

Add / Deduct / No Change \$ \_\_\_\_\_

**E2** Reference Electrical Drawing Sheets E1L – Electrical Lighting Floor Plans,

Electrical Drawing Sheet E7 – Interior Light Fixture Schedule.

- A. LOBBY 101 – Add two (2) mono-point Type-TH3 light fixtures above and connect to local branch lighting circuit THRU LCP-1 (R19) 3A-22.

- B. LIGHT FIXTURE SCHEDULE – Add the following model number and description:

TH3 HALO #L80815NF9035P,  
SINGLE 3” DIAMETER LED ADJUSTABLE CYLINDER TRACK HEAD WITH WHITE FINISH, STANDARD TRIAC/ELV DIMMING DRIVER, NARROW FLOOD DISTRIBUTION AND 21W, 3500K, 90CRI, 1500 LUMEN NOMINAL LED. MOUNTED SO THAT BOTTOM OF FIXTURE IS APPROX. 4’-0” FROM ROOF DECK ABOVE, JUST BELOW AND CENTERED BETWEEN SUSPENDED ARCHITECTURAL CLOUDS WITH HALO #L973P, MONOPOINT CANOPY WITH WHITE FINISH, AND A HALO #L948, 48” WHITE EXTENSION WAND. (COORDINATE WITH THE ENGINEER).

Add / Deduct / No Change \$ \_\_\_\_\_

**E3** Reference Electrical Drawing Sheets E1L, E2L, and E3L – Electrical Lighting Floor Plans,

Electrical Drawing Sheet E7 – Interior Light Fixture Schedule, and

Light Fixture Submittal Review (Register No. 25015 – Rev 0 (Part-1)):

Include the following clarifications on the light fixture types that are shown in the Light Fixture Submittal Review Comments as still to be determined (TBD).

- A. **(3) TYPE-P1 → (2) TYPE-F6:** Change the three (3) Type-P1 light fixtures currently shown in CAFÉ AREA 125, to now be two (2) new Type-F6 light fixtures.

INTERIOR LIGHT FIXTURE SCHEDULE – Add the following model number and description:

F6 CORELITE #DSI-WS-2L35-1D-UNV-AC48-ST/JB4,  
4’ LINEAR LED SUSPENDED MNTD. FIXTURE WITH WHITE HOUSING, STANDARD 0-10V DIMMING DRIVER, AND 45.4W, 3500K, 82CRI, 4,622 LUMEN LED. MOUNTED SO THAT BOTTOM OF FIXTURE IS APPROX. 10’-0” AFF AND CENTERED WITHIN RAISED CURVED AREA (COORDINATE WITH THE ENGINEER).

- B. **TYPE-L:** All the Type-L light fixtures currently shown in RECEPTION 103, RECEPTION 104, and RECEPTION 202 (total of five (5)) shall now be changed to the following fixture.

INTERIOR LIGHT FIXTURE SCHEDULE – Revise the following model number and description:

- L LUMINII #LLX18-35K-SL-NC-40 (TAPE LED FIXTURE) with  
#SLW20W-40"-F-S-SA, (HOUSING)  
#MB-S-40-SA, (WALL MOUNTING BASE)  
#EC-SLW20W-R & #EC-SLW20W-L, (EXTRUSION END-CAPS)  
& (2) #EC-MB-PLD-S, (MOUNTING BASE END CAPS),  
40" LINEAR LED TAPE FIXTURE WITH 14.3W, 3500K, 86CRI, 1,300  
TOTAL LUMENS LED, WITH A 40" SHALLOW HOUSING WITH FROSTED  
LENS, SILVER ANODIZED FINISH, MOUNTING BASE, AND END-CAPS.  
MOUNTED SO THAT BOTTOM OF FIXTURE IS APPROX. 3'-0" AFF (JUST  
ABOVE) AND CENTERED ON EACH 3-FORM WALL PANEL  
(COORDINATE WITH INTERIOR ELEVATIONS).

The Type-L light fixtures will require a total of three (3) remote power supplies, designated as Type-LPS. Mount one (1) Type-LPS at each of the following locations: RECEPTION 103, RECEPTION 104, and RECEPTION 202.

INTERIOR LIGHT FIXTURE SCHEDULE – Add the following model number and description:

- LPS LUMINII #PSD-48-24,  
48W-120VAC/24DC LED DIMMING REMOTE POWER SUPPLY.

Add / Deduct / No Change \$ \_\_\_\_\_

**E4** Reference Electrical Drawing Sheets E1L, E2L, and E3L – Electrical Lighting Floor Plans, Electrical Drawing Sheet E7 – Interior Light Fixture Schedule, and

- A. **(4) TYPE-F1 → (4) TYPE-F7:** Change the four (4) Type-F1 suspended light fixtures currently shown in STUDY AREA 117 and STUDY AREA 118, to now be four (4) new Type-F7 surface mounted light fixtures and install under new architectural ceilings as shown in attached Sketch-E12.

INTERIOR LIGHT FIXTURE SCHEDULE – Add the following model number and description:

- F7 CORELITE #DSI-WS-1L35-1D-UNV-SU-JB-4,  
4' LINEAR LED SURFACE MNTD. FIXTURE WITH WHITE HOUSING,  
STANDARD 0-10V DIMMING DRIVER, AND 31.8W, 3500K, 82CRI,  
3,290 LUMEN LED.

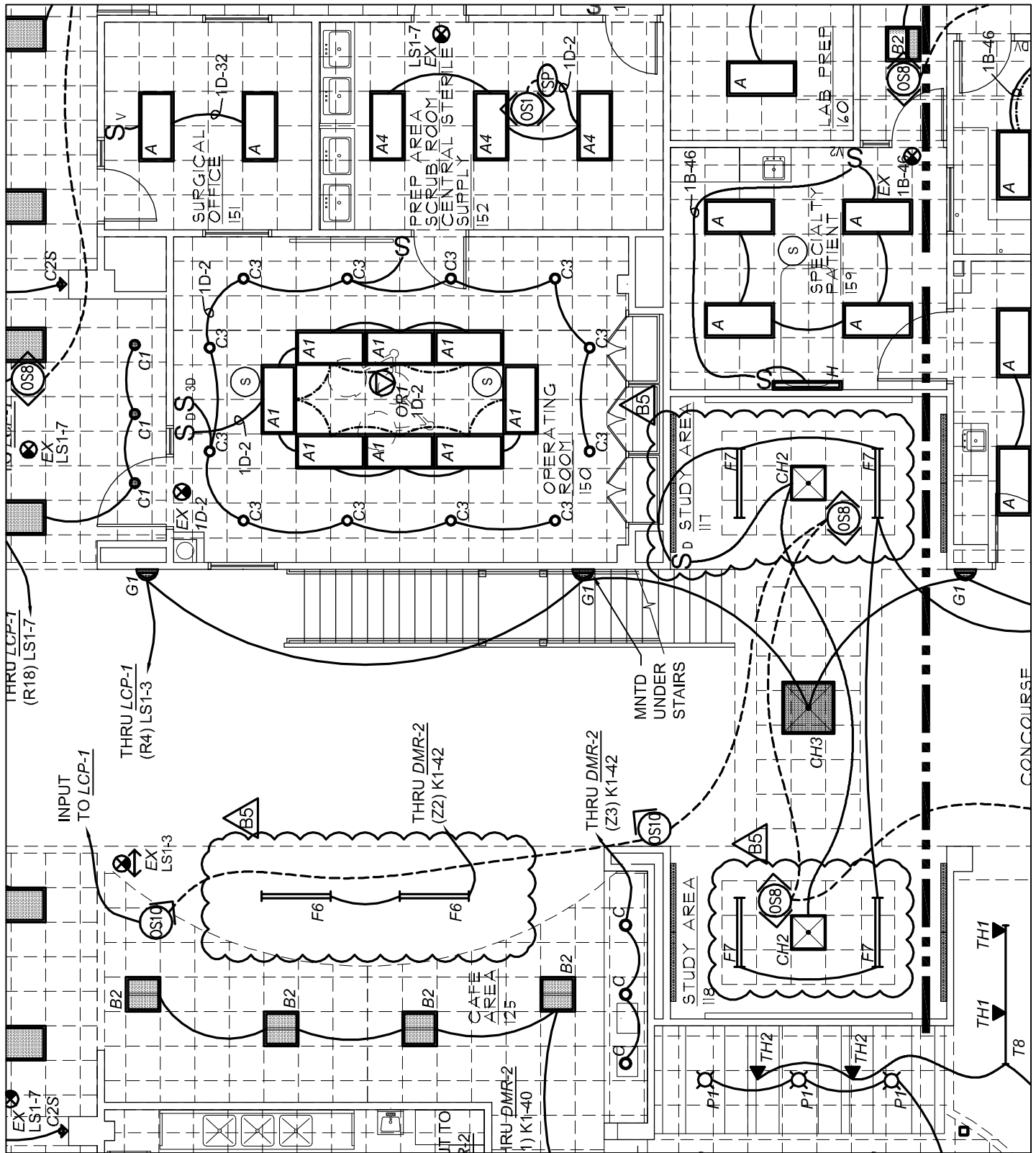
- B. **(2) TYPE-CH2:** Add two (2) new Type-CH2 surface mounted light fixtures, one (1) centered in STUDY AREA 117 and one (1) centered in STUDY AREA 118 and connect to the area lighting circuit THRU LCP-1 (R19) 3A-22, and a new added local dimmer switch located in the STUDY AREA 117, as shown in attached Sketch-E12.

INTERIOR LIGHT FIXTURE SCHEDULE – Add the following model number and description:

- CH2 SPI ADVENT #AIC11891-L71.7WDML-PT21-120-277V-3500K-H10,  
2'x2' SQUARE LED SURFACE MNTD. FIXTURE WITH PEARL WHITE  
FINISH, STANDARD 0-10V DIMMING DRIVER, AND W, 3500K, 82CRI,  
5,866 LUMEN LED.

Add / Deduct / No Change \$ \_\_\_\_\_

END OF BULLETIN #5 REQUEST



REFERENCE SHEET E1L AND E2L

# ELECTRICAL LIGHTING PARTIAL FIRST FLOOR PLAN

SCALE: 1/8" = 1'-0"



KIRTLAND COMMUNITY COLLEGE  
HEALTH SCIENCES EDUCATION  
AND TRAINING CENTER

4 MILE ROAD  
GRAYLING, MICHIGAN

ISSUED FOR:  
MEP BULLETIN #5

DATE:  
05-18-2016

SHEET NUMBER:

SK-E12